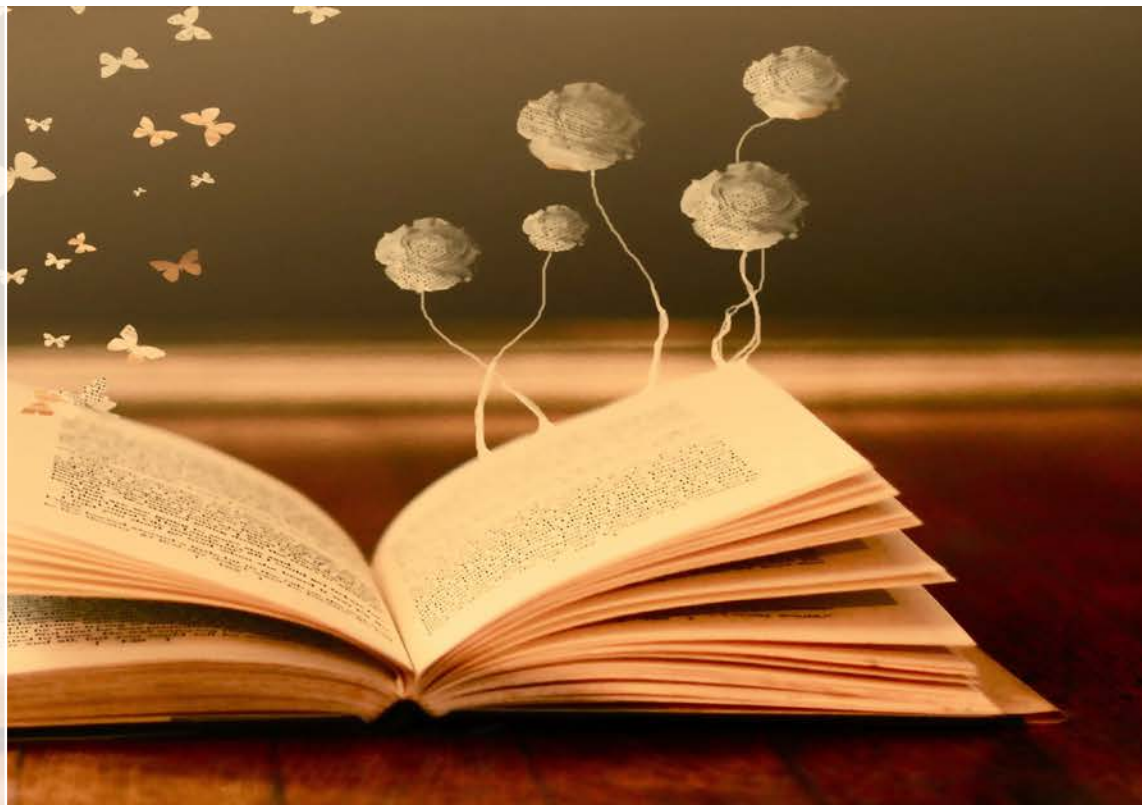


ENGLISH Department

Student Learning Guide

2017



輔仁大學英國語文學系
24205 新北市新莊區中正路 510 號

TEL: 02-2905-2561

FAX: (02)2905-2163

教育目標、師資、課程設計、注意事項、學習地圖、校園禮儀

英文系 106 新生導航手冊

Table of Contents 目錄

| | | |
|------|--|-------|
| I. | Introduction: Department Vision, Special Features of the Department, Department History 簡介：本系教育目標、本系特色、本系系史 | 01-03 |
| | Faculty and Staff 師資與專長 | 04-11 |
| II. | Curriculum 課程設計 | |
| | University Requirements 校必、選修 | 12-13 |
| | Overall Design 課程結構 | 14-15 |
| | Year by Year Required Courses 各年級必修學分表 | 16-17 |
| | Graduation Benchmark Regulation 畢業門檻 | 18-21 |
| | Basic Language Courses 基礎語言課程 | 22-23 |
| | Basic Content Courses 基礎語言研究與文學文化課程 | 24-25 |
| | Advanced Courses: Elective Course Lists 進階課程：選修科目一覽表 | |
| | Literature and Culture Courses 文學與文化課程 | 26-27 |
| | Language Studies Courses 語言研究課程 | 28-29 |
| | Professional Training Courses 專業訓練課程 | 30-31 |
| III. | Important Rules for Students 學生注意事項 | 32-33 |
| IV. | Learning Map 學習課程地圖 | 34-35 |
| V. | CFLL Campus Etiquette 外語學院校園禮儀 | 36 |

FU JEN CATHOLIC UNIVERSITY

DEPARTMENT OF ENGLISH LANGUAGE AND LITERATURE

DEPARTMENT HISTORY

In 1963 the English Department, under the chairmanship of Fr. Peter Venne, SVD, participated in the reestablishment in Taiwan of the former Fu Jen University of Beijing. Fr. Venne was chair from 1963-1974, followed by Fr. Pierre Demers (1974-1982), Sr. Heliena Krenn (1982-1988), Dr. Joyce C.H. Liu (1988-1993), Mr. Thomas Nash (1993-1999), Ms. Cecilia H.C. Liu (1999-2002), Dr. Raphael J. Schulte (2002-October 2003), Mr. Thomas Nash (Acting, November 2003-July 2004), Dr. Yun-Pi Yuan (August 2004-July 2010), Dr. Kate C.W. Liu (August 2010 – July 2013), Dr. Yun-Pi Yuan (August 2013-July 2015), and Dr. Joseph Murphy (August 2015 -). From 1967 to 1981 the Department granted B.A. degrees to an average of 50 students a year; since 1982 the number of graduates has increased to an average of 70 a year. Thanks to the endeavors of each chair and the department faculty, the English Department plays an important role in the field of English education in Taiwan and consistently develops persons of exceptional English ability for the public and private sectors.

Graduates of the English Department have been successful in many fields, including business, public relations, advertising, transportation, academia, language teaching, translation, literature, linguistics, editing, publishing, news

reporting, creative writing, arts and entertainment, tourism, hotel and food industry, banking, and computer science.

DEPARTMENT VISION

The English Department of Fu Jen Catholic University endeavors to educate our students to become creative, critical and productive in English, to respect others as individuals, to develop a strong sense of social responsibility, to maintain a global perspective and to adapt to change, to respect and seek to actualize truth, goodness, and beauty in our lives.

DEPARTMENT OBJECTIVES

To realize this vision, we set the following as the department's educational objectives:

1. to train students' abilities in advanced English communication and in self-improvement in these abilities,
2. to provide students with general knowledge of English linguistics, literatures, cultures, and history,
3. to inspire students to develop in-depth understanding and pragmatic skills in English-related fields in a global context, and to nourish students' creativity, analytical thinking, communication skills, adaptability,

cooperativeness, and ethical awareness in all learning situations.

SPECIAL FEATURES OF THE DEPARTMENT

1. All-English instruction and well-coordinated language training.
2. Well-designed courses with diverse teaching methods and materials focusing on interactivity, cooperative learning, and multimedia resources.
3. Three course groups—literature and culture, language studies, professional training—to ensure both solid training in liberal arts and multiple options in career development.
4. Theater performances both within and outside classes.
5. Abundant multimedia and online learning resources to support students' autonomous learning.
6. Courses, learning activities, and exchange programs sufficient to enhance students' social awareness, critical thinking, and global perspectives.

天主教輔仁大學英國語文學系

本系系史

本系於民國52年在文訥神父任期中在台復校。歷屆系主任為：文訥神父（1963-1974）、談德義神父（1974-1982）、賀永光修女（1982-1988）、劉紀蕙教授（1988-1993）、那湯姆副教授（1993-1999）、劉雪珍副教授（1999-2002）、蕭笛雷副教授（2002-2003年10月）、那湯姆副教授代理（2003年11月-2004年7月）、袁韻璧副教授（2004年8月-2010年7月）、劉紀雯副教授（2010年8月-2013年7月）、袁韻璧副教授（2013年8月-2015年7月）以及墨樵副教授（2015年8月~迄今）。

自民國56年至70年，本系畢業生人數平均為50人，自民國71年起，畢業生人數增加為平均每年70人。在歷屆系主任戮力經營下，本系在台灣英文教育上一直扮演極重要的角色，為國內外公私立機構培育優秀的全方位英語專才。

本系畢業生在諸多領域自由發展，如商業、公關、廣告、交通運輸、語言教學、翻譯、文學、語言學、編輯、出版、新聞報導、文藝創作、歌唱、戲劇表演、旅遊、旅館及餐飲服務、金融界及電腦界等，成就斐然。

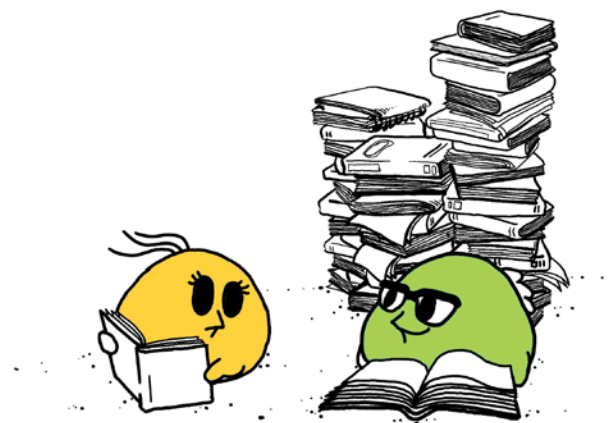
本系教育目標

英文系教學旨在培育學生在社會上

1. 以英文主動學習、發揮創意並進行批判思考；
2. 了解文化差異，尊重他人與自我；
3. 負責積極，具全球視野與調適力。
4. 尊重及體現生命之真、善、美、聖意義。

為達到以上理想，英文系的教學方針如下：

1. 訓練學生進階英語溝通、表達與自我改進能力；
2. 提供學生語言學、文學、文化與歷史博雅教育；
3. 激勵學生在英語相關領域中發展專業知識、興趣與實作技巧；

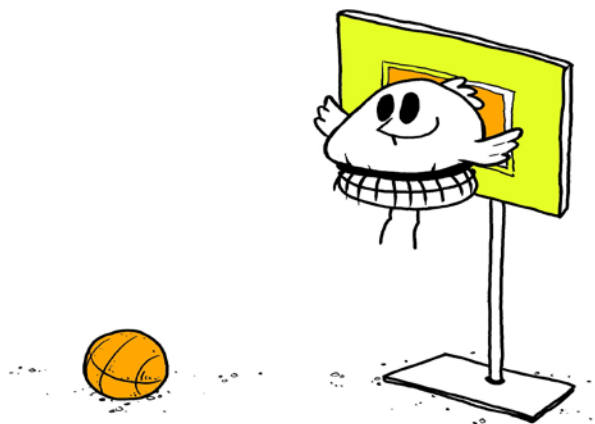


圖案設計：王裘琳同學 Image Design: Jude Wang

4. 並藉由所有學習活動培養學生的創意、分析力、溝通能力、調適力、合作與道德意識。

本系特色

1. **全英語教學**：所有課程以英語講授，核心語言課程小班教學，橫向、縱向間緊密結合，合作無間。
2. **課程設計精良、教學方式活潑**：22學分聽說讀寫必修課程完整規劃，循序漸進，並搭配專業英語課程。藉多元教學法和多媒體教材引發學習興趣，鼓勵學生積極互動，合作學習。
3. **三大類進階課程範疇**：進階專業學分選修彈性大，學生可就「文學與文化」、「語言研究」、「專業訓練」三類進階課程範疇自由選課，接受紮實的博雅訓練，同時發展專長。
4. **英語戲劇演出傳統悠久**：長期以來，不間斷的課內外戲劇表演，活潑地學習語言、文學，並培育戲劇專業人才。
5. **多媒體與網路教學資源豐富**：教師建構文學與文化教學資料庫、卓越大學英文網、線上英語自學中心、輔仁英語網路學院等，以供學生課內外自主學習。
6. **社會服務與跨文化溝通**：利用多種課內外活動與交換生計畫，培養同學縝密的思考、批判能力，積極的社會關懷和廣博的全球觀。



Faculty and Staff

Full-time Faculty

Joseph Murphy
Associate Professor
Chair

PhD in English Literature/University of Pennsylvania, USA
American Literature, Literature and the Visual Arts, Modernism and Postmodernism

Doris Li-wen Chang
Associate Professor

PhD in Comparative Literature Program/Fu Jen Catholic University
Comparative Literature (Literature and Religion, Psychoanalysis and Buddhism, Comparative Drama), Translation

Bi-chu Chen
Associate Professor

PhD in English Teaching/Tamkang University
Lexical Semantics, Translation & Oral Interpretation, Academic/ Business Reading & Writing, TESOL – Digital Learning

Cecilia H.C. Liu
Associate Professor
Chair of English Dept., SOCE, FJCU

MA in English Literature/Fu Jen Catholic University
20th Century British Literature, American Literature, Medieval Literature, Western Drama

Kate Chiwen Liu
Associate Professor

PhD in English Literature/State University of New York, Stony Brook, USA
Contemporary Canadian Literature and Film, Literary Theories, Postmodernism

Doris Yu-chih Shih
Associate Professor

PhD in Educational Curriculum & Instruction/Texas A&M University, USA
TESOL, Computer-Assisted Instruction, Educational Technology, intercultural communication

Yun-Pi Yuan
Associate Professor
Vice Dean, CFLL, FJCU

EdD in Applied Linguistics/Columbia University, USA
TESOL, Applied Linguistics, Language Assessment

John Basourakos
Assistant Professor

PhD in Humanities Interdisciplinary Program/Concordia University, Canada
Drama Theory, Ethics, Educational Theory

Paul Bellew
Assistant Professor

PhD in English/University of Oregon, USA
Poetry and Poetics, Modernism, Gender and Sexuality

Tammy Huei-Lien Hsu
Assistant Professor
Co-hired with the Holistic Education Center, FJCU

PhD in Educational Psychology/University of Illinois at Urbana-Champaign, USA
Second/foreign language assessment, Mixed methods design, World Englishes, Sociolinguistics

Mary Wan-Lun Lee
Assistant Professor
Co-hired with the Holistic Education Center, FJCU

Donna Tong
Assistant Professor

Chung-Pei Tsai
Assistant Professor
Co-hired with the Holistic Education Center, FJCU

Lydia Ming-i Tseng
Assistant Professor
Co-hired with the Holistic Education Center, FJCU

Sherri Yi-Chun Wei
Assistant Professor
Co-hired with the Holistic Education Center, FJCU

Li-Tang Yu
Assistant Professor
Co-hired with the Holistic Education Center, FJCU

Julie Lee
Secretary

Sophie Lee
Secretary

PhD in Applied Linguistics & English Language Teaching/University of Warwick, UK
English language teaching, literature in ELT, cooperative learning, course design, materials development, web-based language learning and teaching

PhD in English/University of California, Irvine, USA
American Literature and Culture, Asian American Studies, Gender Studies

PhD in Curriculum and Instruction (ESL/TESOL)/University of Wisconsin-Madison, USA
Educational Language Policy, TESOL, CALL

PhD in Applied Linguistics/Lancaster University, UK
ESL/EFL Writing Pedagogy and Research, Qualitative Research, Discourse Analysis (CDA, Genre Analysis), Teacher Professional Development, English for Academic Purposes

PhD in Learner Autonomy & Online Language Learning/University of Warwick, UK
Learner Autonomy, Blended Learning, Listening Strategies, Practitioner Research (Action Research and Exploratory Practice)

PhD in Foreign Language Education/University of Texas at Austin, USA
Computer-Assisted Language Learning, TESOL, Language Teacher Development

BA in English/Fu Jen Catholic University
Administrative Affairs (undergraduate program)

BA in Applied Linguistics and Language Studies/Chung Yuan Christian University
Administrative Affairs (MA program)

輔仁大學英國語文學系師資與專長

專任師資

墨樵

副教授兼系主任

美國賓州大學英美文學博士

美國文學、文學與視覺藝術、現代主義與後現代主義

張璩文

副教授

輔仁大學比較文學研究所博士

比較文學（文學與宗教、精神分析與佛教對話研究、比較戲劇）、翻譯

陳碧珠

副教授

淡江大學英文學系英語教學博士

詞彙語意學、筆譯／口譯、學術／商務英文、英語教學－數位學習

劉雪珍

副教授兼進修部英文系主任

輔仁大學英國語文學研究所碩士

廿世紀英國文學、美國文學、中世紀文學、西方戲劇

劉紀雯

副教授

美國紐約州立大學石溪分校英美文學博士

當代加拿大文學與電影、文學理論、後現代主義

施佑芝

副教授

美國德州農工大學教育課程與教學博士

英語教學、電腦輔助教學、教育科技、跨文化溝通

袁韻璧

副教授兼外語學院副院長

美國哥倫比亞大學應用語言學博士

英語教學、應用語言學、語言評量

包磊思

助理教授

加拿大康克迪亞大學人文學博士

戲劇史、倫理學、教育理論

貝潞

助理教授

美國奧勒岡大學英語博士

詩學研究、現代主義、性別理論研究

徐慧蓮

助理教授

本校全人教育課程中心合聘

美國伊利諾大學香檳校區教育心理博士

外語測試、質量綜合研究、社會語言學

李宛倫

助理教授

本校全人教育課程中心合聘

英國華芮克(華威)大學英語教學暨應用語言學博士

英語教學理論與實務、文學教學、合作學習、課程設計與教材研發、網路輔助語言教學

董多芳
助理教授

美國加州大學爾灣分校英語博士
美國文學與文化、亞裔美國文化研究、性別研究

蔡中蓓
助理教授
本校全人教育課程中心合聘

美國威斯康辛大學麥迪遜校區課程與教學博士
多媒體輔助英語教學、英語教學理論與方法、語言教育政策、批判應用語言學、語言政治、語言與認同、第二外語習得理論、質性研究法

曾明怡
助理教授
本校全人教育課程中心合聘

英國蘭開斯特大學應用語言學博士
英文寫作教學、質性研究、言談分析(批判論述分析與文體分析)、教師專業成長、學術英文

魏亦淳
助理教授
本校全人教育課程中心合聘

英國華芮克(華威)大學英語教學博士
自主學習理論、網路混合式學習、聽力策略、教學實務研究(行動研究與探索學習)

余立棠
助理教授
本校全人教育課程中心合聘

美國德州大學奧斯汀分校外語教學博士
電腦輔助語言教學、英語教學、語言教師培訓

李玉璽
秘書

輔仁大學英國語文學系學士
行政(大學部)

李玉璿
秘書

中原大學應用外語系學士
行政(碩士班)

Part-time Faculty

Ching-ching Yi

Professor

MEd in English Education/University of British Columbia, Canada

TESOL, EF trainee teacher education, cooperative learning theory and practice, constructive controversy theory and practice

Fr. Daniel Bauer

Associate Professor

PhD in Comparative Literature/University of Wisconsin, USA

Comparative Literature, Creative Writing: Fiction, Satire, Translation

Belen Sy

Associate Professor

PhD in English Literature and Criticism/Indiana University of Pennsylvania, USA

Comparative Literature, French Literature, TESOL

Maria John Peter Selvamani

Assistant Professor

Full-time in the Holistic Education Center, FJCU

PhD in Zoology/University of Queensland, Australia

Molecular Biology, Medical Ethics

Wen-Ling Su

Assistant Professor

Full-time in the Holistic Education Center, FJCU

PhD in Comparative Literature Program/Fu Jen Catholic University

TESL, Rhetoric, Literary Theory (Memory Narratives), British and American Literary Modernism

Faith Yang

Assistant Professor

PhD, Center for Mind & Brain Sciences/University of Trento, Italy

Cognitive Neurosciences, Neurolinguistics, Second Language Acquisition

Jennifer Chiu

Lecturer

MA, Graduate Institute of English Language and Literature/Fu Jen Catholic University

English and American Literature

Kenneth Chi

Lecturer

MA in TESOL/New York University, USA

Media Lessons, Grammar Teaching, Testing, ESL/EFL Curriculum Design

Jennifer H. Hsiang

Lecturer

MBA/National University – San Diego, USA

Business Correspondence, Conversation, Listening & Reading, English Presentation

Ying-ping (Tina) Kuo

Lecturer

MA/University of Pennsylvania, USA

TESOL, Children's Literature and English Teaching, Curriculum Design and Material Development, Freshman English, Teacher's Training, English for Specific Purposes

Gretchen Lee

Lecturer

MA in English Literature/Fu Jen Catholic University

English Literature, Business English

Katy Lee

Lecturer

MA in Journalism, Political Science/University of Iowa, USA

English Writing, Grammar Teaching, Media Lessons

Hegel Tsai
Lecturer

MA in Dramatic Theory/Nation Taiwan University
Performing

Andrew Wu
Lecturer

MA in English Literature/Fu Jen Catholic University, Bayreuth University , Germany
20th Century American Literature, Musical Theater, Public Speaking, Literature and Education

Jane Yang
Lecturer

MEd in Curriculum & Instruction/University of Texas at Austin, USA
TESOL, Teaching Children

Patrice Yang
Lecturer

PhD Student in Comparative Literature Program/Fu Jen Catholic University
MA in English Literature/University of Nebraska-Lincoln, USA
American Literature, TESOL, European Literature

*Full-time faculty from other departments in the university at times also teach in the English Department.

兼任師資

易青青
教授

加拿大英屬哥倫比亞大學英語教育碩士
英語文教學

鮑端磊
副教授

美國威斯康辛大學比較文學博士
比較文學、創意寫作：小說創作、諷刺文學、翻譯

劉淑真
副教授

美國印第安那大學賓州校區英文文學與批評博士
比較文學、法國文學、英語教學

司馬忠
助理教授
本校全人教育課程中心專任

澳洲昆士蘭大學動物學博士
分子生物學, 醫學倫理

蘇文伶
助理教授
本校全人教育課程中心專任

輔仁大學跨文化研究所比較文學博士
英語教學、修辭學、文學理論（記憶敘事）、英美現代文學

楊馥如
助理教授

義大利特倫多大學大腦與心智科學研究所博士
神經語言學、英語教學

邱文媛
講師

輔仁大學英國語文學研究所碩士
英美文學

齊國斌
講師

美國紐約大學英語教學碩士
多媒體語言教學、文法教學、語言測驗、課程設計

向慧芳
講師

美國加州聖地牙哥大學企管碩士
商用英文寫作、商用英語會話、商業英語聽讀、商業簡報

郭瑩萍
講師

美國賓州大學英語教學碩士
英語教學、兒童文學、課程設計與教材研發、大一英文、英語師資訓練、專業英語教學

李桂芬
講師

輔仁大學英國語文學系碩士
英美文學、商用英文

李桂香
講師

美國愛荷華大學新聞・政治碩士
英文寫作、文法教學、多媒體語言教學

蔡格爾
講師

台灣大學戲劇學研究所碩士
表演藝術

吳柏德
講師

輔仁大學英國語文學系文學組、德國拜羅伊特大學英國文學碩士
二十世紀美國文學、音樂劇、演說與辯論、文學與教育

楊禎禎
講師

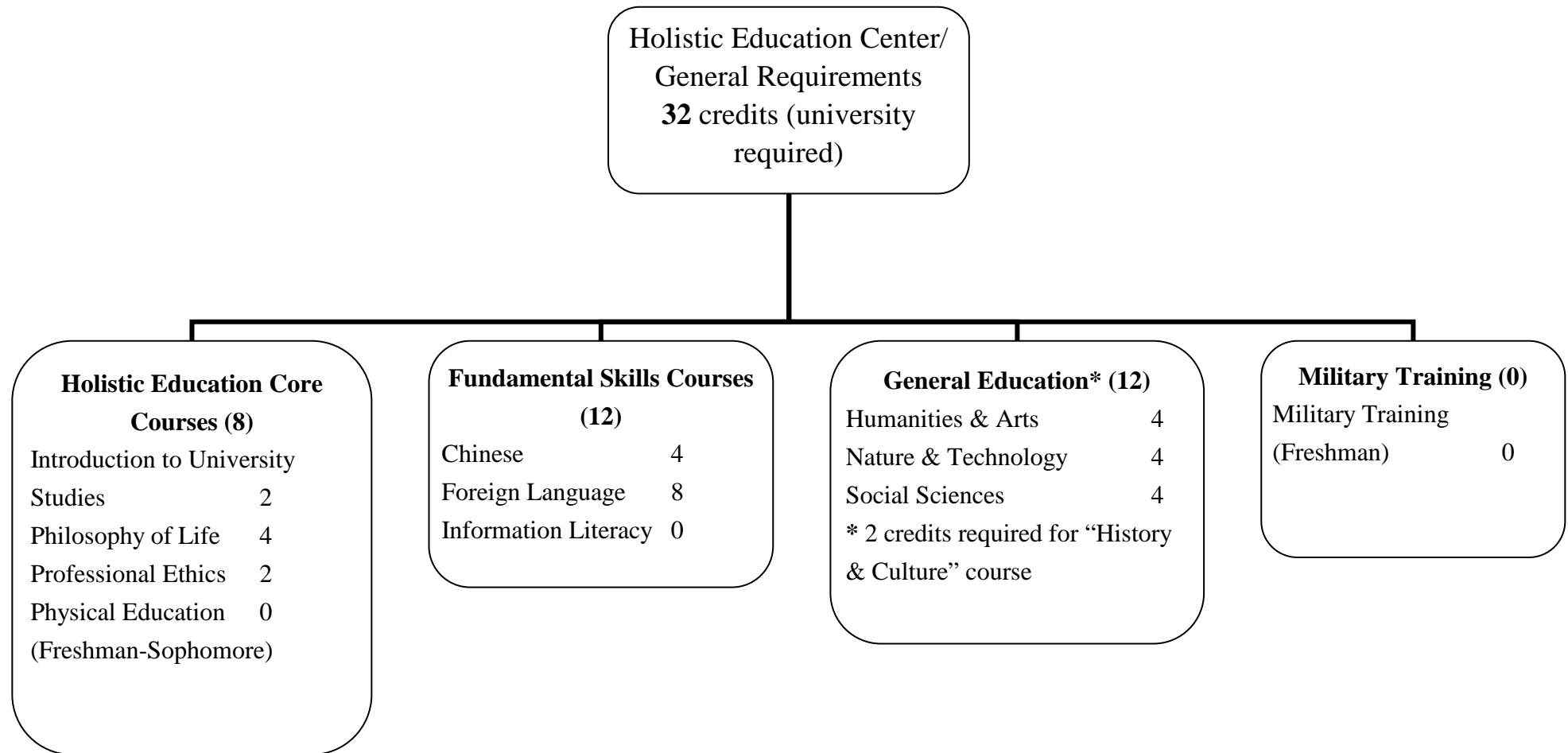
德州大學奧斯汀校區課程與教學系教育碩士
英語教學、兒童教學

楊蕙君
講師

輔仁大學跨文化研究所比較文學博士班
美國內布拉斯加大學英美文學碩士
美國小說、英語教學、歐洲文學

※本校其他系所專任教師亦視情形支援本系師資

University Requirements



校必修／必選課程

全人教育課程中心必／
選修課程
32 學分（校定）

全人教育核心課程 (8 學分)

| | |
|-------------|---|
| 大學入門 | 2 |
| 人生哲學 | 4 |
| 專業倫理 | 2 |
| 體育（大一至大二必修） | 0 |

基本能力課程 (12 學分)

| | |
|------|---|
| 國文 | 4 |
| 外國語文 | 8 |
| 資訊素養 | 0 |

通識涵養課程 (12 學分)

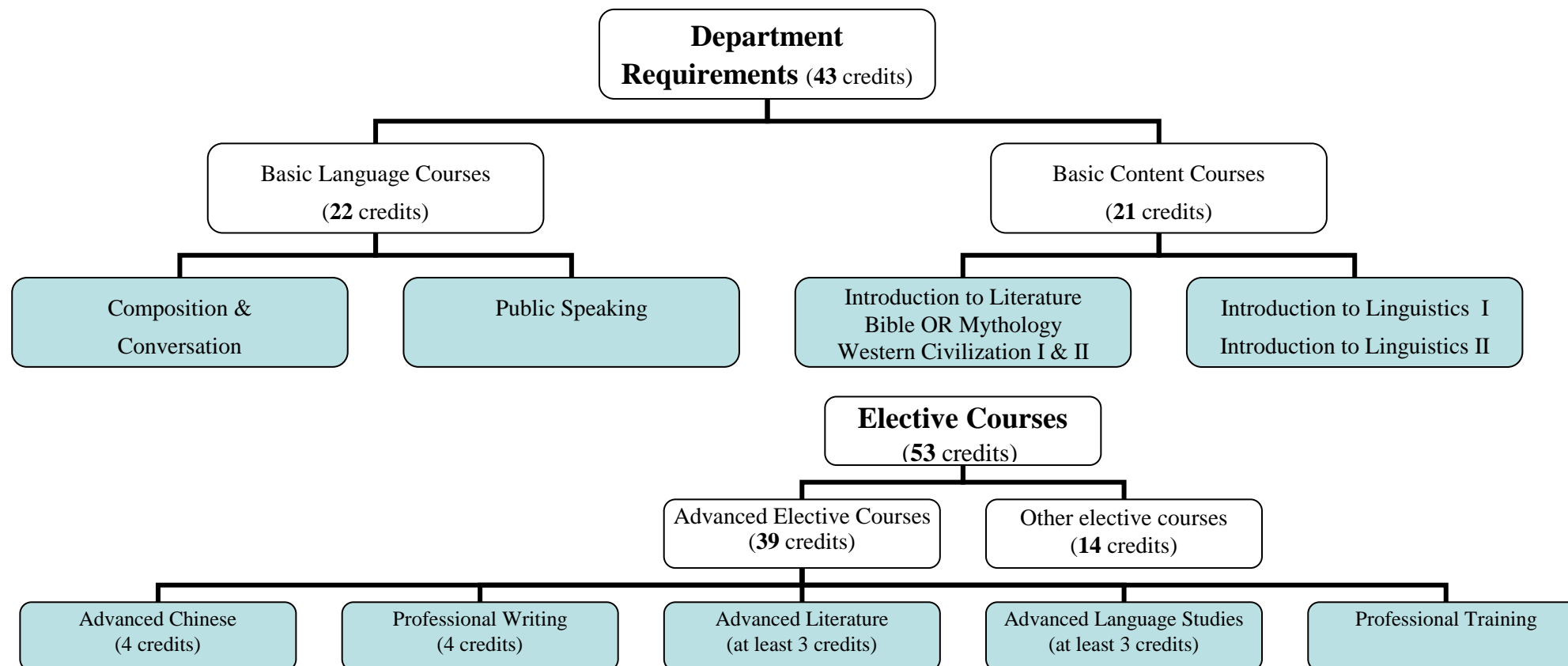
| | |
|---------|---|
| 人文與藝術領域 | 4 |
| 自然與科技領域 | 4 |
| 社會科學領域 | 4 |

*每一領域須修四學分，須
內含「歷史與文化」至少 2
學分

全民國防教育軍事訓練課程 (0 學分)

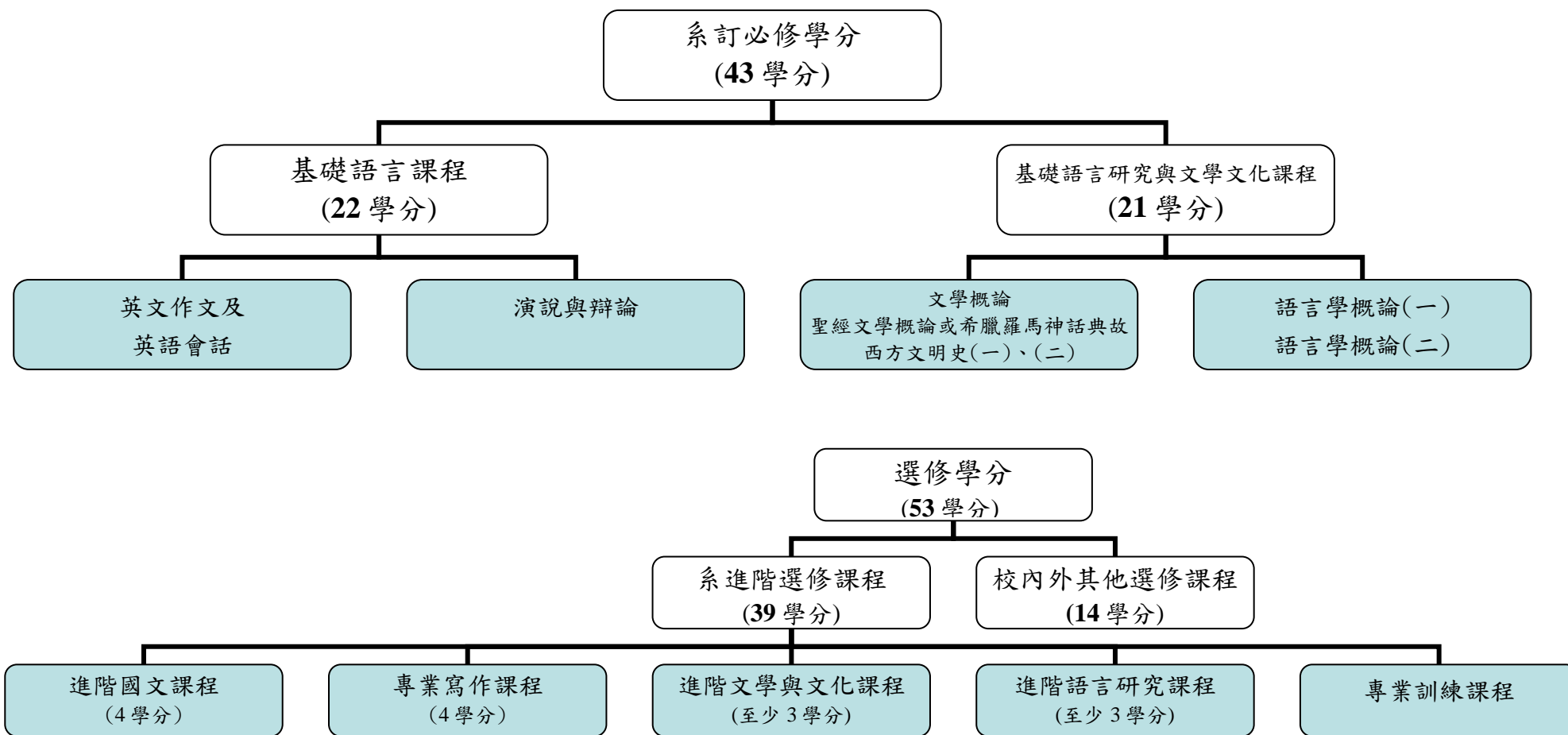
全民國防教育軍事訓練（大
一） 0

ENGLISH DEPARTMENT CURRICULUM - Overall Design (beginning with students entering Fall 2016)



1. **The students who fulfill the University and Department requirements and acquire 128 credits are qualified for graduation.**
2. The three components of the English Department Curriculum are designed to carry out the Department Vision. (p.1)
 - The **Basic Language Courses** train students' English language, communication and presentation skills.
 - The **Basic Content (Language Studies and Literature) Courses** introduce students to literature in English, linguistics and Western civilization in relation to Taiwanese society.
 - The **Advanced Elective Courses** include senior "Professional Writing" courses, "Advanced Chinese" courses, and "Advanced Courses." **The Advanced Courses** (further divided into **Advanced Literature, Advanced Language Studies and Professional Training**) help students further develop their analytical thinking, values, and professional knowledge through the study of a major emphasis of their own choice. To lay a firm foundation in the humanities, students are required to take at least 3 credits respectively from the categories of **Advanced Literature and Advanced Language Studies**, and altogether 15 credits from the two above-mentioned categories.
3. Instruction in English by the high percentage of foreign professors and highly proficient local professors provides direct, intensive exposure to English and to Western culture.

英文系課程設計（一〇五學年度入學新生適用）



英文系課程計劃

本系學生修完校訂及系訂必修課程，同時達到128學分者即符合畢業資格。本系課程三大重心乃為實踐本系教育目標（參見第二頁）所設計。基礎語言課程旨在訓練學生的英語語言能力。基礎語言研究與文學文化課程旨在向學生介紹英語文學、語言學、西方及世界文化以及中國文化。進階選修課程包含進階國文課程、大四「專業寫作」課程及「系進階」課程。「系進階」課程則由學生自「文學與文化」（至少3學分）、「語言研究」（至少3學分）、「專業訓練」等三大範疇中選修課程（合計至少31學分），進一步發展分析思考能力、價值觀及專業知識。本系以全英語授課之方式及由學有專精的中、外籍教授帶領學生直接且深入探討英語文及西方文化。

YEAR-BY-YEAR REQUIRED COURSES

| FRESHMAN | | | SOPHOMORE | | | JUNIOR | | | SENIOR | | |
|--|------------------|-----------------------------|------------------------------------|------------------|-----------------------------|---|------------------|---|------------------------|------------------|-----------------------------|
| | Total Credits | Credits each Semester | | Total Credits | Credits each Semester | | Total Credits | Credits each Semester | | Total Credits | Credits each Semester |
| English Composition I | 4 | 2-2 | English Composition II | 4 | 2-2 | English Composition III | 4 | 2-2 | Professional Writing | 4 | 2-2 |
| English Conversation I | 2 | 1-1 | English Conversation II | 2 | 1-1 | English Conversation III | 2 | 1-1 | Professional Writing | 4 | 2-2 |
| Introduction to the Bible as Literature | 3 | 3-0 or | Public Speaking | 4 | 2-2 | Time for Class Advisor | 6 | 3-3 | Time for Class Advisor | 0 | |
| or Greek and Roman Mythology ¹ | | 0-3 | Introduction to Linguistics II | 3 | 3-0 | | | | | | |
| Introduction to Literature | 6 | 3-3 | History of Western Civilization I | 3 | 3-0 | | | | | | |
| Introduction to Linguistics I | 3 | 0-3 | History of Western Civilization II | 3 | 0-3 | | | | | | |
| Chinese | 4 | 2-2 | Foreign Language II ² | 4 | 2-2 | | | | | | |
| Foreign Language I ² | 4 | 2-2 | Philosophy of Life ³ | 4 | 2-2 | | | | | | |
| Introduction to University Studies | 2 | 2-0 | PE | 0 | 15-12 | | | | | | |
| | 28 | 15-13 or 12-16 | Time for Class Advisor | 0 | | | | | | | |
| PE | 0 | | | | | OTHER REQUIREMENTS | | | | | |
| Military Training | 0 | | | | | University | | Department | | | |
| Time for Class Advisor | 0 | | | | | 12 credits General Education (Freshman-Senior) | | 31 credits Department Advanced Courses (Sophomore-Senior) ⁴ | | | |
| | | | | | | 2 credits Professional Ethics (Junior-Senior) | | 4 credits Chinese required by Department (Sophomore-Senior) | | | |

- Note:**
- Introduction to the Bible as Literature** or **Greek and Roman Mythology**: at least one must be taken.
 - Foreign Language**: Those meeting the language level of GEPT High Intermediate or its equivalents **can** take 2nd foreign language courses (8 credits); otherwise, see page 18, article III. 2 under Graduation Benchmark Enforcement Rules.
 - Philosophy of Life** must be taken before **Professional Ethics** (or at least in the same semester).
 - The department requirement of 31 credits of Advanced Courses** includes at least **3 credits of advanced Literature and Culture courses** and **3 credits of advanced Language Studies courses**. See the lists of possible electives on pages 26-31.

各年級必修學分表

| 一年級 | 二年級 | 三年級 | 四年級 | | | | | | | | | | | | | | | | | | | | | | | | | | | | | | | | | | | | | | | | | | | | | | | | | | | | | | | | | | | | | | | | | | | | | | | | | | | | | | | | | | | | | | | | | | | | | | | | | | | | | | | | | |
|--|--|----------------------|-------|----------|---|-----|---------|----------------------------|--|---|----------------------------|-----|---|--|---|-----------------------|--|-----|------|---|-----|----------|---|-----|----|---|-----|-------------------|---|-----|------|---|-----|--|----|----------------------|----|---|--|----|---|--|------|---|--|---|--|-----|-------|---------|---|-----|---------|---|-----|-------|---|-----|----------|---|-----|----------|---|-----|----------|---|-----|-------------------|---|-----|-------------------|---|-----|--|----|-------|----|---|--|------|---|--|---|--|-----|-------|---------|---|-----|---------|---|-----|--|---|-----|------|---|--|---|--|-----|-------|--------|---|-----|------|---|--|
| <table style="width: 100%; border-collapse: collapse;"> <thead> <tr> <th style="width: 80%;"></th> <th style="text-align: center;">總學分</th> <th style="text-align: center;">單學期學分</th> </tr> </thead> <tbody> <tr><td>英文作文（一）</td><td style="text-align: center;">4</td><td style="text-align: center;">2-2</td></tr> <tr><td>英語會話（一）</td><td style="text-align: center;">2</td><td style="text-align: center;">1-1</td></tr> <tr><td>聖經文學概論</td><td style="text-align: center;">3</td><td style="text-align: center;">3-0</td></tr> <tr><td>或</td><td></td><td style="text-align: center;">或</td></tr> <tr><td>希臘羅馬神話典故¹</td><td></td><td style="text-align: center;">0-3</td></tr> <tr><td>文學概論</td><td style="text-align: center;">6</td><td style="text-align: center;">3-3</td></tr> <tr><td>語言學概論(一)</td><td style="text-align: center;">3</td><td style="text-align: center;">0-3</td></tr> <tr><td>國文</td><td style="text-align: center;">4</td><td style="text-align: center;">2-2</td></tr> <tr><td>外國語文²</td><td style="text-align: center;">4</td><td style="text-align: center;">2-2</td></tr> <tr><td>大學入門</td><td style="text-align: center;">2</td><td style="text-align: center;">2-0</td></tr> <tr style="border-top: 1px solid black;"><td></td><td style="text-align: center;">28</td><td style="text-align: center;">15-13 or 12-16</td></tr> <tr><td>體育</td><td style="text-align: center;">0</td><td></td></tr> <tr><td>軍訓</td><td style="text-align: center;">0</td><td></td></tr> <tr><td>導師時間</td><td style="text-align: center;">0</td><td></td></tr> </tbody> </table> | | 總學分 | 單學期學分 | 英文作文（一） | 4 | 2-2 | 英語會話（一） | 2 | 1-1 | 聖經文學概論 | 3 | 3-0 | 或 | | 或 | 希臘羅馬神話典故 ¹ | | 0-3 | 文學概論 | 6 | 3-3 | 語言學概論(一) | 3 | 0-3 | 國文 | 4 | 2-2 | 外國語文 ² | 4 | 2-2 | 大學入門 | 2 | 2-0 | | 28 | 15-13 or 12-16 | 體育 | 0 | | 軍訓 | 0 | | 導師時間 | 0 | | <table style="width: 100%; border-collapse: collapse;"> <thead> <tr> <th style="width: 80%;"></th> <th style="text-align: center;">總學分</th> <th style="text-align: center;">單學期學分</th> </tr> </thead> <tbody> <tr><td>英文作文（二）</td><td style="text-align: center;">4</td><td style="text-align: center;">2-2</td></tr> <tr><td>英語會話（二）</td><td style="text-align: center;">2</td><td style="text-align: center;">1-1</td></tr> <tr><td>演說與辯論</td><td style="text-align: center;">4</td><td style="text-align: center;">2-2</td></tr> <tr><td>語言學概論(二)</td><td style="text-align: center;">3</td><td style="text-align: center;">3-0</td></tr> <tr><td>西方文明史（一）</td><td style="text-align: center;">3</td><td style="text-align: center;">3-0</td></tr> <tr><td>西方文明史（二）</td><td style="text-align: center;">3</td><td style="text-align: center;">0-3</td></tr> <tr><td>外國語文²</td><td style="text-align: center;">4</td><td style="text-align: center;">2-2</td></tr> <tr><td>人生哲學³</td><td style="text-align: center;">4</td><td style="text-align: center;">2-2</td></tr> <tr style="border-top: 1px solid black;"><td></td><td style="text-align: center;">27</td><td style="text-align: center;">15-12</td></tr> <tr><td>體育</td><td style="text-align: center;">0</td><td></td></tr> <tr><td>導師時間</td><td style="text-align: center;">0</td><td></td></tr> </tbody> </table> | | 總學分 | 單學期學分 | 英文作文（二） | 4 | 2-2 | 英語會話（二） | 2 | 1-1 | 演說與辯論 | 4 | 2-2 | 語言學概論(二) | 3 | 3-0 | 西方文明史（一） | 3 | 3-0 | 西方文明史（二） | 3 | 0-3 | 外國語文 ² | 4 | 2-2 | 人生哲學 ³ | 4 | 2-2 | | 27 | 15-12 | 體育 | 0 | | 導師時間 | 0 | | <table style="width: 100%; border-collapse: collapse;"> <thead> <tr> <th style="width: 80%;"></th> <th style="text-align: center;">總學分</th> <th style="text-align: center;">單學期學分</th> </tr> </thead> <tbody> <tr><td>英文作文（三）</td><td style="text-align: center;">4</td><td style="text-align: center;">2-2</td></tr> <tr><td>英語會話（三）</td><td style="text-align: center;">2</td><td style="text-align: center;">1-1</td></tr> <tr style="border-top: 1px solid black;"><td></td><td style="text-align: center;">6</td><td style="text-align: center;">3-3</td></tr> <tr><td>導師時間</td><td style="text-align: center;">0</td><td></td></tr> </tbody> </table> | | 總學分 | 單學期學分 | 英文作文（三） | 4 | 2-2 | 英語會話（三） | 2 | 1-1 | | 6 | 3-3 | 導師時間 | 0 | | <table style="width: 100%; border-collapse: collapse;"> <thead> <tr> <th style="width: 80%;"></th> <th style="text-align: center;">總學分</th> <th style="text-align: center;">單學期學分</th> </tr> </thead> <tbody> <tr style="border-top: 1px solid black;"><td>專業寫作課程</td><td style="text-align: center;">4</td><td style="text-align: center;">2-2</td></tr> <tr><td>導師時間</td><td style="text-align: center;">0</td><td></td></tr> </tbody> </table> | | 總學分 | 單學期學分 | 專業寫作課程 | 4 | 2-2 | 導師時間 | 0 | |
| | 總學分 | 單學期學分 | | | | | | | | | | | | | | | | | | | | | | | | | | | | | | | | | | | | | | | | | | | | | | | | | | | | | | | | | | | | | | | | | | | | | | | | | | | | | | | | | | | | | | | | | | | | | | | | | | | | | | | | | | |
| 英文作文（一） | 4 | 2-2 | | | | | | | | | | | | | | | | | | | | | | | | | | | | | | | | | | | | | | | | | | | | | | | | | | | | | | | | | | | | | | | | | | | | | | | | | | | | | | | | | | | | | | | | | | | | | | | | | | | | | | | | | | |
| 英語會話（一） | 2 | 1-1 | | | | | | | | | | | | | | | | | | | | | | | | | | | | | | | | | | | | | | | | | | | | | | | | | | | | | | | | | | | | | | | | | | | | | | | | | | | | | | | | | | | | | | | | | | | | | | | | | | | | | | | | | | |
| 聖經文學概論 | 3 | 3-0 | | | | | | | | | | | | | | | | | | | | | | | | | | | | | | | | | | | | | | | | | | | | | | | | | | | | | | | | | | | | | | | | | | | | | | | | | | | | | | | | | | | | | | | | | | | | | | | | | | | | | | | | | | |
| 或 | | 或 | | | | | | | | | | | | | | | | | | | | | | | | | | | | | | | | | | | | | | | | | | | | | | | | | | | | | | | | | | | | | | | | | | | | | | | | | | | | | | | | | | | | | | | | | | | | | | | | | | | | | | | | | | |
| 希臘羅馬神話典故 ¹ | | 0-3 | | | | | | | | | | | | | | | | | | | | | | | | | | | | | | | | | | | | | | | | | | | | | | | | | | | | | | | | | | | | | | | | | | | | | | | | | | | | | | | | | | | | | | | | | | | | | | | | | | | | | | | | | | |
| 文學概論 | 6 | 3-3 | | | | | | | | | | | | | | | | | | | | | | | | | | | | | | | | | | | | | | | | | | | | | | | | | | | | | | | | | | | | | | | | | | | | | | | | | | | | | | | | | | | | | | | | | | | | | | | | | | | | | | | | | | |
| 語言學概論(一) | 3 | 0-3 | | | | | | | | | | | | | | | | | | | | | | | | | | | | | | | | | | | | | | | | | | | | | | | | | | | | | | | | | | | | | | | | | | | | | | | | | | | | | | | | | | | | | | | | | | | | | | | | | | | | | | | | | | |
| 國文 | 4 | 2-2 | | | | | | | | | | | | | | | | | | | | | | | | | | | | | | | | | | | | | | | | | | | | | | | | | | | | | | | | | | | | | | | | | | | | | | | | | | | | | | | | | | | | | | | | | | | | | | | | | | | | | | | | | | |
| 外國語文 ² | 4 | 2-2 | | | | | | | | | | | | | | | | | | | | | | | | | | | | | | | | | | | | | | | | | | | | | | | | | | | | | | | | | | | | | | | | | | | | | | | | | | | | | | | | | | | | | | | | | | | | | | | | | | | | | | | | | | |
| 大學入門 | 2 | 2-0 | | | | | | | | | | | | | | | | | | | | | | | | | | | | | | | | | | | | | | | | | | | | | | | | | | | | | | | | | | | | | | | | | | | | | | | | | | | | | | | | | | | | | | | | | | | | | | | | | | | | | | | | | | |
| | 28 | 15-13 or 12-16 | | | | | | | | | | | | | | | | | | | | | | | | | | | | | | | | | | | | | | | | | | | | | | | | | | | | | | | | | | | | | | | | | | | | | | | | | | | | | | | | | | | | | | | | | | | | | | | | | | | | | | | | | | |
| 體育 | 0 | | | | | | | | | | | | | | | | | | | | | | | | | | | | | | | | | | | | | | | | | | | | | | | | | | | | | | | | | | | | | | | | | | | | | | | | | | | | | | | | | | | | | | | | | | | | | | | | | | | | | | | | | | | |
| 軍訓 | 0 | | | | | | | | | | | | | | | | | | | | | | | | | | | | | | | | | | | | | | | | | | | | | | | | | | | | | | | | | | | | | | | | | | | | | | | | | | | | | | | | | | | | | | | | | | | | | | | | | | | | | | | | | | | |
| 導師時間 | 0 | | | | | | | | | | | | | | | | | | | | | | | | | | | | | | | | | | | | | | | | | | | | | | | | | | | | | | | | | | | | | | | | | | | | | | | | | | | | | | | | | | | | | | | | | | | | | | | | | | | | | | | | | | | |
| | 總學分 | 單學期學分 | | | | | | | | | | | | | | | | | | | | | | | | | | | | | | | | | | | | | | | | | | | | | | | | | | | | | | | | | | | | | | | | | | | | | | | | | | | | | | | | | | | | | | | | | | | | | | | | | | | | | | | | | | |
| 英文作文（二） | 4 | 2-2 | | | | | | | | | | | | | | | | | | | | | | | | | | | | | | | | | | | | | | | | | | | | | | | | | | | | | | | | | | | | | | | | | | | | | | | | | | | | | | | | | | | | | | | | | | | | | | | | | | | | | | | | | | |
| 英語會話（二） | 2 | 1-1 | | | | | | | | | | | | | | | | | | | | | | | | | | | | | | | | | | | | | | | | | | | | | | | | | | | | | | | | | | | | | | | | | | | | | | | | | | | | | | | | | | | | | | | | | | | | | | | | | | | | | | | | | | |
| 演說與辯論 | 4 | 2-2 | | | | | | | | | | | | | | | | | | | | | | | | | | | | | | | | | | | | | | | | | | | | | | | | | | | | | | | | | | | | | | | | | | | | | | | | | | | | | | | | | | | | | | | | | | | | | | | | | | | | | | | | | | |
| 語言學概論(二) | 3 | 3-0 | | | | | | | | | | | | | | | | | | | | | | | | | | | | | | | | | | | | | | | | | | | | | | | | | | | | | | | | | | | | | | | | | | | | | | | | | | | | | | | | | | | | | | | | | | | | | | | | | | | | | | | | | | |
| 西方文明史（一） | 3 | 3-0 | | | | | | | | | | | | | | | | | | | | | | | | | | | | | | | | | | | | | | | | | | | | | | | | | | | | | | | | | | | | | | | | | | | | | | | | | | | | | | | | | | | | | | | | | | | | | | | | | | | | | | | | | | |
| 西方文明史（二） | 3 | 0-3 | | | | | | | | | | | | | | | | | | | | | | | | | | | | | | | | | | | | | | | | | | | | | | | | | | | | | | | | | | | | | | | | | | | | | | | | | | | | | | | | | | | | | | | | | | | | | | | | | | | | | | | | | | |
| 外國語文 ² | 4 | 2-2 | | | | | | | | | | | | | | | | | | | | | | | | | | | | | | | | | | | | | | | | | | | | | | | | | | | | | | | | | | | | | | | | | | | | | | | | | | | | | | | | | | | | | | | | | | | | | | | | | | | | | | | | | | |
| 人生哲學 ³ | 4 | 2-2 | | | | | | | | | | | | | | | | | | | | | | | | | | | | | | | | | | | | | | | | | | | | | | | | | | | | | | | | | | | | | | | | | | | | | | | | | | | | | | | | | | | | | | | | | | | | | | | | | | | | | | | | | | |
| | 27 | 15-12 | | | | | | | | | | | | | | | | | | | | | | | | | | | | | | | | | | | | | | | | | | | | | | | | | | | | | | | | | | | | | | | | | | | | | | | | | | | | | | | | | | | | | | | | | | | | | | | | | | | | | | | | | | |
| 體育 | 0 | | | | | | | | | | | | | | | | | | | | | | | | | | | | | | | | | | | | | | | | | | | | | | | | | | | | | | | | | | | | | | | | | | | | | | | | | | | | | | | | | | | | | | | | | | | | | | | | | | | | | | | | | | | |
| 導師時間 | 0 | | | | | | | | | | | | | | | | | | | | | | | | | | | | | | | | | | | | | | | | | | | | | | | | | | | | | | | | | | | | | | | | | | | | | | | | | | | | | | | | | | | | | | | | | | | | | | | | | | | | | | | | | | | |
| | 總學分 | 單學期學分 | | | | | | | | | | | | | | | | | | | | | | | | | | | | | | | | | | | | | | | | | | | | | | | | | | | | | | | | | | | | | | | | | | | | | | | | | | | | | | | | | | | | | | | | | | | | | | | | | | | | | | | | | | |
| 英文作文（三） | 4 | 2-2 | | | | | | | | | | | | | | | | | | | | | | | | | | | | | | | | | | | | | | | | | | | | | | | | | | | | | | | | | | | | | | | | | | | | | | | | | | | | | | | | | | | | | | | | | | | | | | | | | | | | | | | | | | |
| 英語會話（三） | 2 | 1-1 | | | | | | | | | | | | | | | | | | | | | | | | | | | | | | | | | | | | | | | | | | | | | | | | | | | | | | | | | | | | | | | | | | | | | | | | | | | | | | | | | | | | | | | | | | | | | | | | | | | | | | | | | | |
| | 6 | 3-3 | | | | | | | | | | | | | | | | | | | | | | | | | | | | | | | | | | | | | | | | | | | | | | | | | | | | | | | | | | | | | | | | | | | | | | | | | | | | | | | | | | | | | | | | | | | | | | | | | | | | | | | | | | |
| 導師時間 | 0 | | | | | | | | | | | | | | | | | | | | | | | | | | | | | | | | | | | | | | | | | | | | | | | | | | | | | | | | | | | | | | | | | | | | | | | | | | | | | | | | | | | | | | | | | | | | | | | | | | | | | | | | | | | |
| | 總學分 | 單學期學分 | | | | | | | | | | | | | | | | | | | | | | | | | | | | | | | | | | | | | | | | | | | | | | | | | | | | | | | | | | | | | | | | | | | | | | | | | | | | | | | | | | | | | | | | | | | | | | | | | | | | | | | | | | |
| 專業寫作課程 | 4 | 2-2 | | | | | | | | | | | | | | | | | | | | | | | | | | | | | | | | | | | | | | | | | | | | | | | | | | | | | | | | | | | | | | | | | | | | | | | | | | | | | | | | | | | | | | | | | | | | | | | | | | | | | | | | | | |
| 導師時間 | 0 | | | | | | | | | | | | | | | | | | | | | | | | | | | | | | | | | | | | | | | | | | | | | | | | | | | | | | | | | | | | | | | | | | | | | | | | | | | | | | | | | | | | | | | | | | | | | | | | | | | | | | | | | | | |
| <table style="width: 100%; border-collapse: collapse;"> <thead> <tr> <th colspan="2" style="text-align: center;">其他必須選修學分</th> </tr> <tr> <th style="width: 50%; text-align: center;">校訂</th> <th style="width: 50%; text-align: center;">系訂</th> </tr> </thead> <tbody> <tr> <td style="text-align: center;">12學分的通識教育課程（大一至大四）</td> <td style="text-align: center;">31學分的系進階課程（大二至大四）⁴</td> </tr> <tr> <td style="text-align: center;">2學分的專業倫理學課程（大三至大四）³</td> <td style="text-align: center;">4學分的系進階國文課程（大二至大四）</td> </tr> </tbody> </table> | | | | 其他必須選修學分 | | 校訂 | 系訂 | 12 學分的通識教育課程（大一至大四） | 31 學分的系進階課程（大二至大四） ⁴ | 2 學分的專業倫理學課程（大三至大四） ³ | 4 學分的系進階國文課程（大二至大四） | | | | | | | | | | | | | | | | | | | | | | | | | | | | | | | | | | | | | | | | | | | | | | | | | | | | | | | | | | | | | | | | | | | | | | | | | | | | | | | | | | | | | | | | | | | | | | | | | |
| 其他必須選修學分 | | | | | | | | | | | | | | | | | | | | | | | | | | | | | | | | | | | | | | | | | | | | | | | | | | | | | | | | | | | | | | | | | | | | | | | | | | | | | | | | | | | | | | | | | | | | | | | | | | | | | | | | | | | | |
| 校訂 | 系訂 | | | | | | | | | | | | | | | | | | | | | | | | | | | | | | | | | | | | | | | | | | | | | | | | | | | | | | | | | | | | | | | | | | | | | | | | | | | | | | | | | | | | | | | | | | | | | | | | | | | | | | | | | | | |
| 12 學分的通識教育課程（大一至大四） | 31 學分的系進階課程（大二至大四） ⁴ | | | | | | | | | | | | | | | | | | | | | | | | | | | | | | | | | | | | | | | | | | | | | | | | | | | | | | | | | | | | | | | | | | | | | | | | | | | | | | | | | | | | | | | | | | | | | | | | | | | | | | | | | | | |
| 2 學分的專業倫理學課程（大三至大四） ³ | 4 學分的系進階國文課程（大二至大四） | | | | | | | | | | | | | | | | | | | | | | | | | | | | | | | | | | | | | | | | | | | | | | | | | | | | | | | | | | | | | | | | | | | | | | | | | | | | | | | | | | | | | | | | | | | | | | | | | | | | | | | | | | | |

備註：

1. 聖經文學概論或希臘羅馬神話典故擇一選修即可。
2. 外國語文：符合本校英語免修資格（全民英檢中高級複試或其他等同語測）的同學，可直接選修第二外國語〔基礎非英文〕課程。不符合資格的同學，需選修「外國語文（高級英文）」，詳細資格說明請見第20頁畢業門檻施行細則第三款第二條。
3. 修習專業倫理之前應先修畢人生哲學（或至少在同一學期修習）。
4. 系進階課程分為「文學與文化」、「語言研究」和「專業訓練」三範疇，31學分的系進階課程須至少包含「文學與文化」和「語言研究」各3學分課程。（系進階課程選修科目一覽表請參見本簡介第26-31頁。）

Graduation Benchmark Regulations

Two graduation qualifications are required:

1. English Proficiency Test: CEFR (Common European Framework Reference) B2 or the equivalent levels of other language proficiency tests (for details, see article III under Graduation Benchmark Enforcement Rules).
2. Learning Outcome Demonstration, in one of the following ways (for details, see article IV under Graduation Benchmark Enforcement Rules):
 - i. Junior Research Paper and Convention (with written score of 83 or above);
 - ii. Senior Play Production or Department Magazine Production;
 - iii. Final project or public presentation in a designated project-based course (Graduation Project Production, Academic Writing, English for Academic Purposes, Translation, Journalistic Writing, Business Presentation and Multimedia English Teaching Materials; the department may designate additional courses as well).

Graduation Benchmark Enforcement Rules

- I. To develop a sense of purpose and direction, students should submit a four-year plan in the freshman year, and revise it every year during the pre-registration period of the second semester.
- II. In the second semester of their junior year students should submit the “Graduation Benchmark Checklist” and “Learning Outcome Demonstration Plan” in order for the department to check their progress in meeting the benchmarks, and to arrange the learning outcome exhibition and convention.
- III. English Proficiency Test:
 1. The English department’s professional language level is:
CEFR (Common Language Framework Reference) B2 Vantage level, or
GEPT High-Intermediate Second Test;
TOFEL-iBT 87 (Listening 21, Reading 22, Speaking 23, Writing 21);
TOEIC 785 (Listening 400, Reading 385);
IELTS 6.0;
TOEIC Speaking and Writing Tests 310 (Speaking 160, Writing 150);
Cambridge Certificate FCE Grade B,
and BULATS ALTE 3.
 2. Those students who pass the CEFR B2 language level (or its equivalent, as indicated above) have the option to take a second foreign language in fulfillment of the 8-credit foreign language requirement. Those who do not pass the CEFR B2 language level (or its equivalent) should abide by the following rules:
 - i. Take department-designated English courses (Foreign Language-English) for the 8-credit foreign language requirement.
 - ii. Take another proficiency test before the end of the junior year.
 - iii. For those who still do not pass the level, take a department-designated makeup course in the first semester of the senior year. This makeup course will not be counted toward students’ graduation credits.

IV. Learning Outcome Demonstration:

1. If the learning outcome project does not include a substantial verbal component (written or oral), a five-page written report is required. The report may be written individually or collaboratively, and it should explain how the project integrates what students have learned in their college years and/or is related to their post-graduation plans. The teacher/advisor overseeing the project will determine if a written report is necessary.
 2. Learning outcome project procedures:
 - i. Students submit their Learning Outcome Demonstration Plan in the pre-registration period of the second semester of their junior year. The plan is to be finalized by the beginning of the senior year, after which no changes are allowed.
 - ii. For students who have not presented their project in other forums, the department organizes a learning outcome demonstration project exhibition and convention sometime in the first semester of students' senior year.
 - iii. The final version of the project is to be submitted to both the student's teacher and the department e-office no later than final exam week of the first semester.
 3. Learning outcome project review: whether the projects will be passed or not is determined by the teacher/advisor of senior play, department magazine, or the designated course, after discussion of the pass/fail criteria in the learning outcome project committee formed by the teachers concerned.
 4. The project is considered "fail" if:
 - i. it does not meet the passing standard of the project advisor/teacher;
 - ii. it is submitted late; and/or
 - iii. it is plagiarized.
- V. If the project is considered "fail," the student must take a capstone course and pass it in the spring semester of his/her senior year in order to graduate on time.
- VI. Students who complete projects with distinct achievements may be awarded Graduation with Academic Distinction or a Certificate of Excellence in Graduation Project, based on the recommendations of the learning outcome project committee.

畢業門檻

畢業門檻規定：

1. 英語能力檢定考試：達到CEFR（Common European Framework of Reference for Languages, 歐洲語言共同參考架構）B2（高階級），或相當程度之其他英語檢定考試標準。（詳細規定請見下列**畢業門檻施行細則**第三條說明）。
2. 學習成果展示, 且以下列形式之一公開發表(詳細規定請見下列**畢業門檻施行細則**第四條說明):
 - i. 大三研究論文（論文成績 83 分或以上）；
 - ii. 畢業公演或系刊(出版品)；
 - iii. 特定課程（畢業專題製作、學術寫作、學術英語、中英翻譯、新聞英語、商務報告、多媒體英語教材，系上視實際開課狀況增刪課程）的期末報告或公開發表

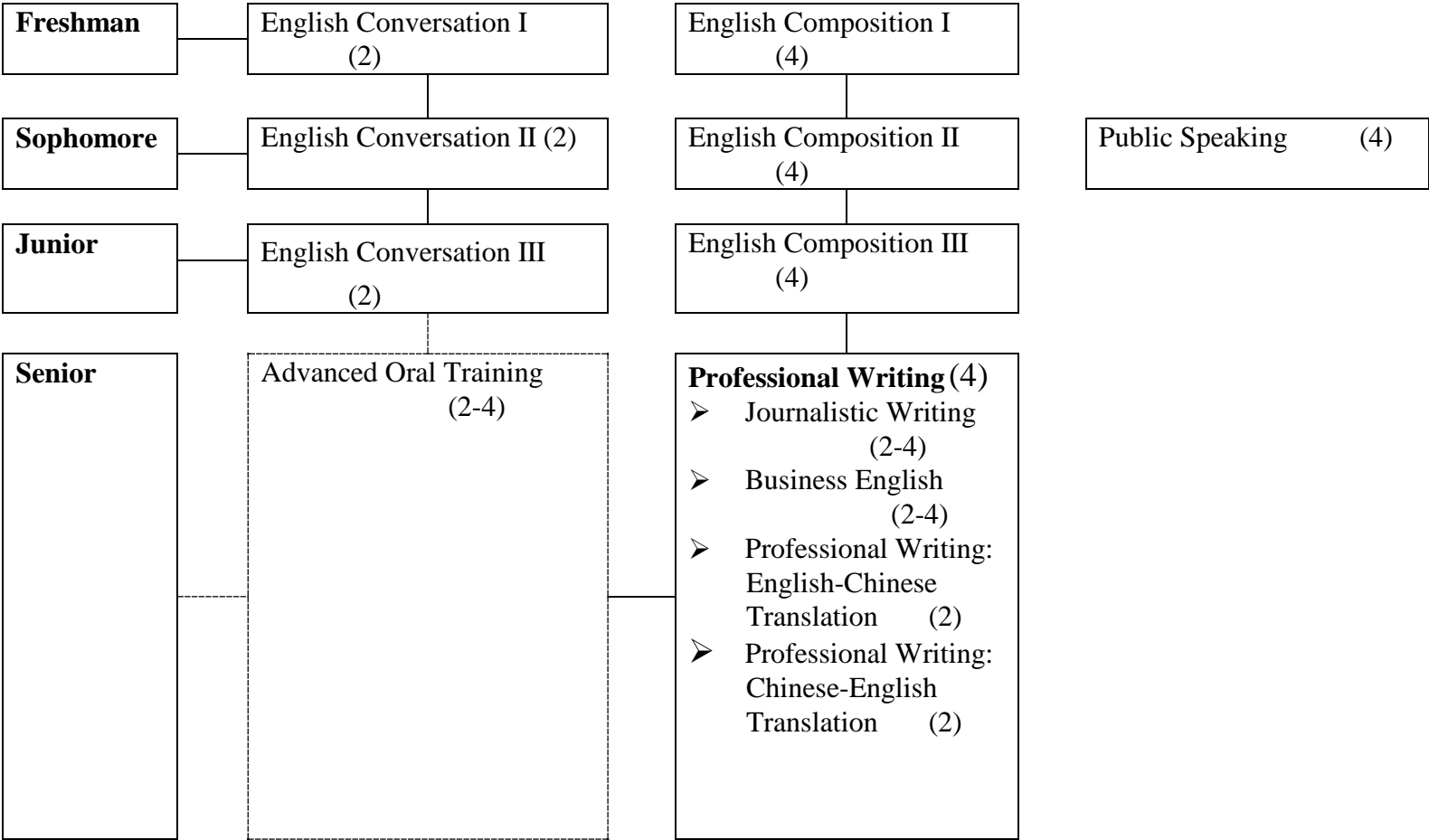
畢業門檻施行細則

- 一、 本系學生需於大一撰寫『四年學習計畫』，並於每學年下學期預註冊時，繳交修正計畫給導師，並儲存於系行政平台 e-office，以利設立下學年之自我學習目標。
- 二、 學生於大三下學期之預註冊時繳交『畢業門檻檢核表』與『學習成果展示計畫書』，以利本系辦公室進行檢核及安排畢業成果發表會，檢核結果作為畢業資格審查依據。
- 三、 英語能力檢定考試細則：
 - 1、 本系英語能力專業標準設為「英語高階能力標準」：即 CEFR 語言能力參考指標 B2 高階級(或全民英檢 GEPT 中高級複試；TOFEL-iBT 87 分(聽力 21 分、閱讀 22 分、口說 23 分、寫作 21 分)；TOEIC785 分(聽力 400 分、閱讀 385 分)；IELTS 6.0；TOEIC 口說與寫作測驗 310 分(口說 160 分, 寫作 150 分) Cambridge Certificate FCE Grade B; BULATS ALTE 3)。
 - 2、 學生若達到前項所述「英語高階能力標準」，得選修第二外語為外國語文學分(8 學分)。若尚未通過以上標準，請遵守以下規定：
 - i. 修習英文系提供師資之全人教育中心「外國語文（高級英文）」、「外國語文（進階英語）」（兩學年 8 學分）
 - ii. 於大三結束前參加以上語言檢定考試，以達畢業標準。
 - iii. 大三下學期末前，未通過以上語測標準者，須於大四上學期選修本系開設的補救課程(不納入畢業學分計算)或參加指定的英語學習活動。
- 四、 學習成果展示細則：
 - 1、 學習成果必須以英文呈現，若無產出相當程度與份量的口頭或書面報告，則需繳交至少五頁的書面報告；可為個人或小組作品。該課程教師或指導老師可決定學生是否須撰寫書面報告。學生須於報告中，說明其學習過程，如何整合四年所學知識，與有助於其畢業後之專業發展。
 - 2、 學習成果展示實施流程：

- i. 學生於大三下學期之預註冊時，繳交學習成果展示計畫書，此計畫書於大四上學期初定案，不得臨時更改。
 - ii. 未曾公開發表過的學生須大四上學期在系方舉辦的學習成果發表會中發表；
 - iii. 學生將發表後的最後定稿（電子檔）繳交給指導老師及系上 e-office，截止日期為大四上學期期末考週。
- 3、學習成果專題審核：經過學習成果專題委員會（含畢業公演教師導演、系刊指導老師、相關任課教師等組成之）訂定通過標準，並負責審核通過與否。
- 4、學習成果專題製作評量，有下列任一情形，以不通過評定之：
- i. 未達任課（或指導）教師設定標準者；
 - ii. 未依規定準時繳交成果；
 - iii. 抄襲之作。
- 五、若學習成果專題評定為不通過，學生須於大四下學期選修一門 capstone 課程，並通過該課程，以便順利畢業。
- 六、學習成果評審之獎勵：學習成果優異者，學習成果專題委員會將頒予優異成績畢業獎或學習成果專題優異獎。

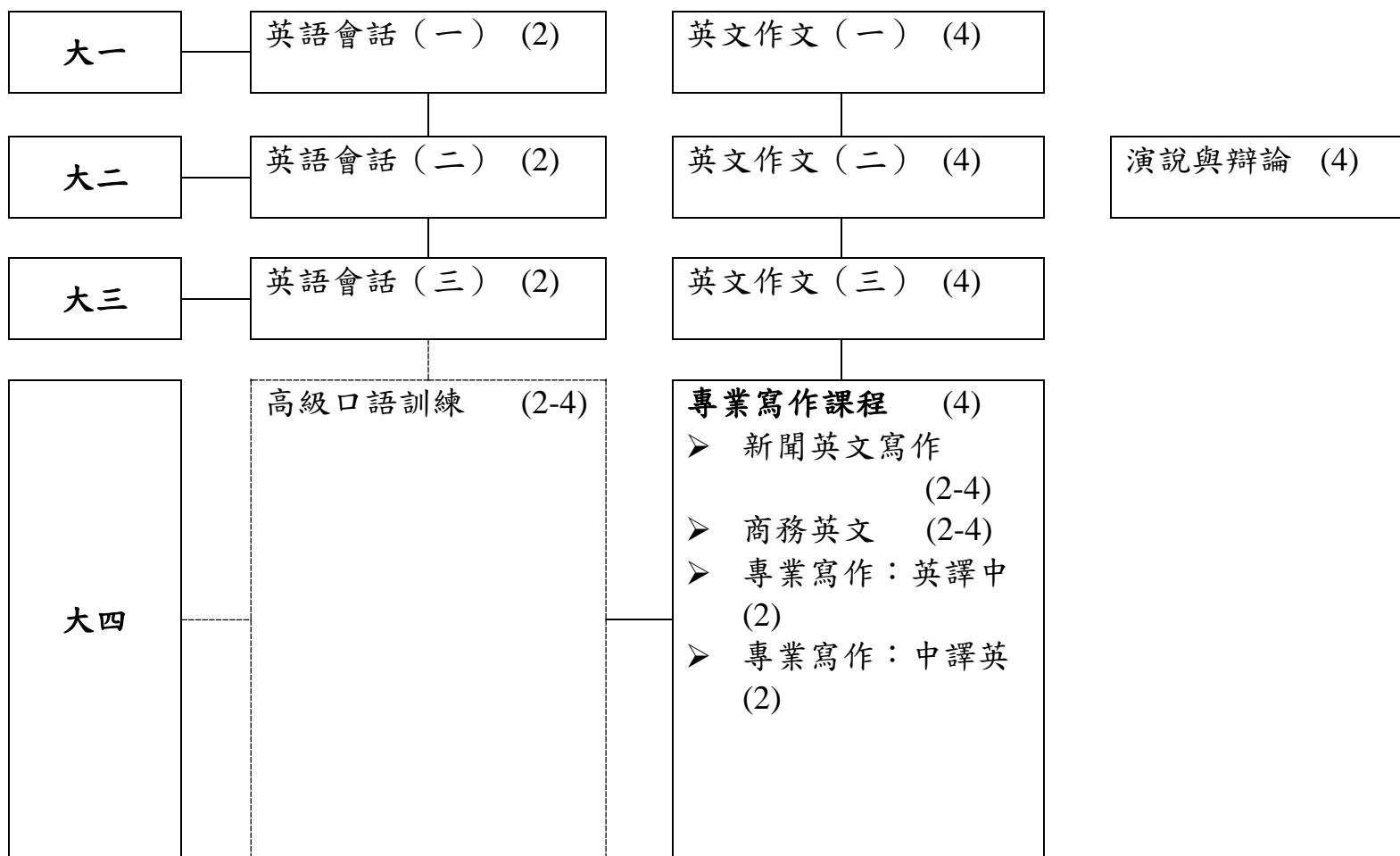
BASIC LANGUAGE COURSES (Department & General Requirements)

Connecting lines & boxes: Solid line = REQUIRED
Broken line = ELECTIVE



基礎語言課程（系必修及共同必修課程）

圖例：實線＝必修
虛線＝選修



BASIC CONTENT (Language Studies and Literature) COURSES

| | |
|-----------|---|
| Freshman | <ul style="list-style-type: none">➤ Introduction to Literature (6)➤ Introduction to the Bible as Literature or Greek and Roman Mythology (3)➤ Introduction to Linguistics I (3) |
| Sophomore | <ul style="list-style-type: none">➤ Introduction to Linguistics II (3)➤ History of Western Civilization I (3)➤ History of Western Civilization II (3) |

基礎語言研究與文學文化課程

大一

- 文學概論 (6)
- 聖經文學概論
或
希臘羅馬神話典故 (3)
- 語言學概論 (一) (3)

大二

- 語言學概論 (二) (3)
- 西方文明史 (一) (3)
- 西方文明史 (二) (3)

ADVANCED LITERATURE AND CULTURE COURSES—Elective Course Lists

Please note:

1. **Introduction to Literature** is a prerequisite for all other Literature and Culture courses, with the exception of Chinese Literature courses.
2. **Adjustment will be made according to the curriculum plan and faculty structure every semester.**

| | <i>ENGLISH LITERATURE</i> | <i>AMERICAN LITERATURE</i> | <i>CHINESE LITERATURE</i> | <i>OTHER LITERATURE</i> |
|----------------------------|--|---|--|--|
| Sophomore | English Literature I (3) English Literature II (3) English Literature III (3) English Literature IV (3) | American Literature I (3) American Literature II (3) | Modern Chinese Fiction(4) Contemporary Chinese Fiction (4) Modern Interpretation of Chinese lyric Poetry (4) Modern Interpretation of Chinese Narrative poetry(4) Advanced Chinese for Overseas Chinese Students (2-4) | Literary Criticism: Detective Fiction (3) Literary Criticism: Travel & Border Crossing (3) |
| Junior & Senior | Shakespeare (3) 16th & 17th Century British Poetry (3) 20 th Century British Poetry(3) British Poetry Survey (3) British & Irish Poetry (3) 20th Century British Women Writers (3) 20th Century British Short Fiction (3) Gender and Sexuality in 20th and 21st Century Poetry (3) Shakespeare and Family (3) Special Topics in British Literature (3) | Major American Works (3) American Poetry (3) Main Street in American Fiction and Film (3) American Literature and Visual Art (3) American Gothic Tradition(3) American Literature and the Sublime (3) North American Postmodern Fiction and Film (3) Asia American Literature (3) Special Topics in American Literature (3) | Holistic Education Center Chinese courses recognized by the Dept. (2-4) Chinese Dept. courses recognized by the Dept. (2-4) | Poetry of the Blues (3) Poetry in the Works of Bob Dylan (3) David Bowie & the Rolling Stones (3) Contemporary Drama and Musicals (3) Sex, Gender and Theatre (3) Minor Literature: Postcolonial and Ethnic Texts (3) Postcolonial and Postmodern Trauma Fiction (3) The Posthuman: Androids, Cyborgs, and Dolls (3) Postcolonial Bildungsroman (3) Postmodern City Film and Global Flows (3) Stories of Growth in World Literature and Film (3) |

「進階文學與文化課程」選修科目一覽表

提醒：

1. 「文學概論」為所有進階文學與文化課程之先修科目（中國文學課程除外）。
2. 每學期實際開設課程視整體課程規劃與師資結構進行調整。

| | 英國文學課程 | 美國文學課程 | 中國文學課程 | 其他文學課程 |
|---------------|--|---|--|--|
| 大二 | 英國文學（一） (3) 英國文學（二） (3) 英國文學（三） (3) 英國文學（四） (3) | 美國文學（一） (3) 美國文學（二） (3) | 現代小說選讀 (4) 當代小說選讀 (4) 古典抒情詩的現代詮釋 (4) 古典敘事詩的現代詮釋 (4) | 文學批評：偵探小說(3) 文學批評：旅行與越界 (3) |
| 大三 & 大四 | 莎士比亞 (3) 十六及十七世紀英國詩 (3) 廿世紀英詩研究 (3) 英國詩 (3) 英國與愛爾蘭詩研究 (3) 廿世紀英國女性作家 (3) 廿世紀英國短篇小說 (3) 廿及廿一世紀英詩中的性與性別 (3) 莎士比亞與家庭 (3) 英國文學專題 (3) | 現當代美國詩 (3) 美國短篇故事 (3) 美國小說與電影中的大街意象 (3) 美國文學與視覺藝術 (3) 美國文學中的哥德傳統 (3) 美國文學與莊嚴美 (3) 北美後現代小說與電影：批判認同 (3) 亞裔美國文學 (3) 美國文學專題 (3) | 進階僑生國文 (2-4) 本系認可之全人教育課程中心開設的中文課程 (2-4) 本系認可之中文系開設課程 (2-4) | 藍調音樂中的詩 (3) 鮑伯迪倫作品中的詩(3) 大衛鮑伊與滾石合唱團 (3) 當代戲劇與音樂劇 (3) 性別、性向與劇場 (3) 少數文學：後殖民與族裔文本 (3) 後殖民與後現代創傷小說 (3) 後人類：生化機器人與傀儡 (3) 後殖民主義成長小說(3) 後現代都市電影與全球流動 (3) 世界小說與電影中的成長故事 (3) |

ADVANCED LANGUAGE STUDIES COURSES—Elective Course Lists

Please note:

1. **Introduction to Linguistics** is a prerequisite for all other courses in Language Studies, with the exception of courses marked *.
2. **Adjustment will be made according to the curriculum plan and faculty structure every semester.**

| | | |
|-----------------------|---|---|
| Sophomore | Technology-Assisted Instruction & Presentation * (3) | |
| Junior & Senior | Psycholinguistics (3) Sociolinguistics (3) Second Language Acquisition (SLA) (3) Vocabulary and Reading Acquisition (3) Language Assessment* (3) Statistics for Language* (3) Discourse Analysis (3) World English/es (3) Sociolinguistics and Corpus Linguistics (3) | Introduction to TEFL (3) ESP Teaching Methodology (3) Computer-Assisted Instruction (CAI) (3) Grammar for Teaching (3) Teaching Conversation (3) Teaching Pronunciation (3) Teaching Reading (3) Teaching Writing (3) The Use of Literature in ELT (3) 3D Animation-ibook Technique on Didactics Application (3) Photomedia and Technology-Enhanced Instruction (3) |

「進階語言研究課程」選修科目一覽表

提醒：

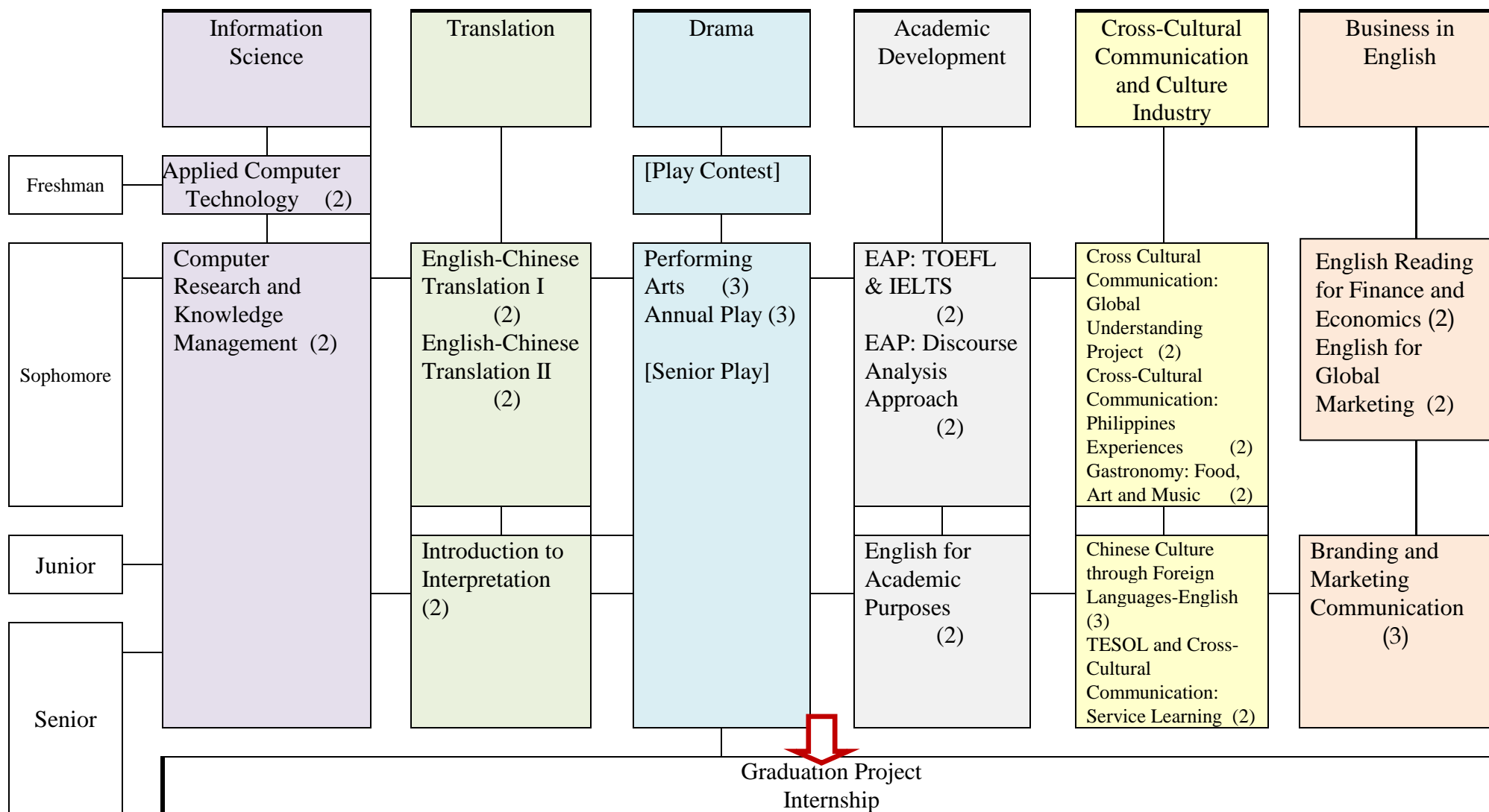
1. 「語言學概論」為所有進階語言研究課程之先修科目。標有*者，表示無先修要求。
2. 每學期實際開設課程視整體課程規劃與師資結構進行調整。

| | | |
|----------|---|--|
| 大二 | 科技輔助教學與簡報* (3) | |
| 大三 大四 | 心理語言學 (3) 社會語言學 (3) 第二語言習得 (3) 字彙與閱讀習得 (3) 語言評量* (3) 語言統計* (3) 言談分析 (3) 世界英文 (3) 社會語言學與語料庫語言學 (3) | 英語教學概論 (3) 專業英語教學法 (3) 電腦輔助教學 (3) 文法教法 (3) 會話教法 (3) 發音教法 (3) 閱讀教法 (3) 寫作教法 (3) 文學在英語教學之運用 (3) 3D動畫電子書之教學應用 (3) 影像媒體及科技輔助教學 (3) |

ADVANCED PROFESSIONAL TRAINING COURSES—Elective Courses

Please note:

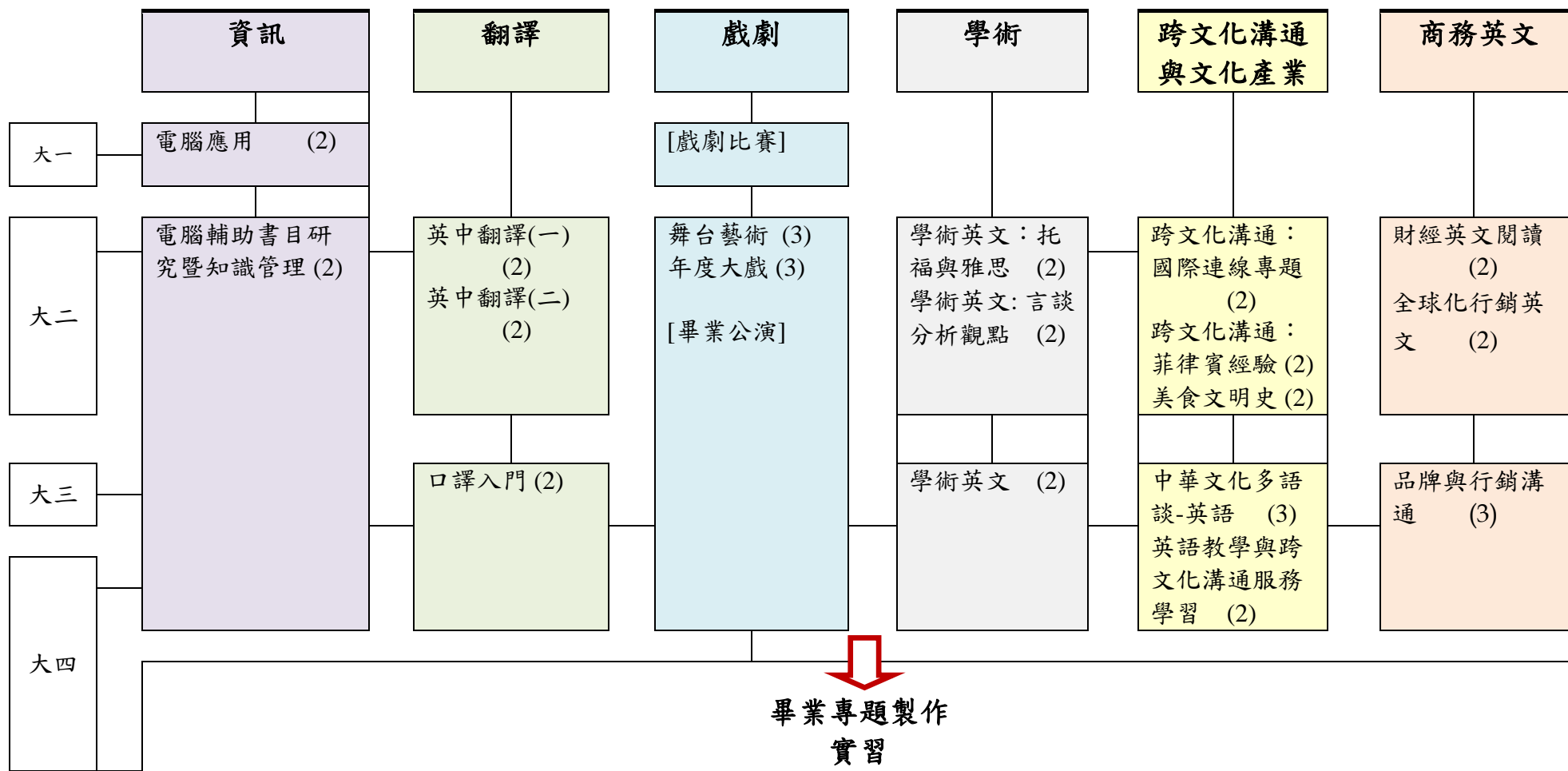
Adjustment will be made according to the curriculum plan and faculty structure every semester.



「專業訓練課程」選修科目一覽表

提醒：

每學期實際開設課程視整體課程規劃與師資結構進行調整。



IMPORTANT RULES FOR STUDENTS

Please see also —

1. Fu Jen Catholic University's Student Handbook for important university rules. (<http://www.fju.edu.tw/resource.jsp?labelID=20>)
2. Explanations in the notes for Pre-registration. (<http://english.fju.edu.tw/Curriculum/StudiesStipulate.asp>)

1. Prerequisite courses

| | | |
|---|---|--|
| Introduction to Literature | ↔ | prerequisite for all other literature and culture courses, except Chinese Literature courses |
| English Composition I English Conversation I | ↔ | prerequisite for English Composition II, English Conversation II |
| English Composition II English Conversation II | ↔ | prerequisite for English Composition III, English Conversation III |
| English Composition III English Conversation III | ↔ | prerequisite for Professional Writing courses |
| Introduction to Linguistics I Introduction to Linguistics II | ↔ | prerequisite for all other courses in language studies, except where noted otherwise. |

2. A student who does not achieve a passing grade in the second semester of English Composition (I, II, or III) or English Conversation (I, II, or III) must repeat both semesters of both courses until a passing grade is achieved. Students may opt out of repeating the first semester of Composition and Conversation **only if the first-semester grade for both courses is 78 or above**. Credits for the same course will be recognized only once.

Each level of Composition requires students to pass a benchmark, that is, a minimum standard for a designated composition or test, as established by the teachers of that level. Students who do not pass the benchmark will not pass Composition, regardless of their overall average in the course, and will need to retake Composition and Conversation according to the rules stated above. Details regarding benchmarks are included in the syllabi for each Composition and Conversation level.

3. 60 is the lowest passing grade. The university allows students who score from 50 - 59 in the first semester of a year course to continue to take the course in the second semester, and then repeat the first semester in the next school year (CC courses excepted). Students who score under 50 may continue the course in the second semester with the permission of the professor (CC courses excepted).
4. Courses with the same title can only be recognized once. (PE courses excepted.)
5. Freshman, sophomore, and junior students need to take at least 12 credits each semester; senior students need to take at least 9 credits each semester.

學生注意事項 (摘錄)

請同時參閱：

1. 學生手札 (<http://www.fju.edu.tw/resource.jsp?labelID=20>)
2. 本系選課說明
(<http://english.fju.edu.tw/Curriculum/StudiesStipulate.asp>)

1. 擋修規定

| | | |
|----------------------|---|-----------------------------------|
| 先修課程 | ↔ | 擋修課程 |
| 文學概論 | ↔ | 所有其他文學與文化課程 (請同時參見頁29-30之相關規定) |
| 英文作文(一) 英語會話(一) | ↔ | 英文作文(二) 英語會話(二) |
| 英文作文(二) 英語會話(二) | ↔ | 英文作文(三) 英語會話(三) |
| 英文作文(三) 英語會話(三) | ↔ | 專業寫作課程 |
| 語言學概論(一) 語言學概論(二) | ↔ | 所有其他語言研究課程 (請同時參見頁31-32之相關規定) |

2. 本系規定學生「英文作文」或「英語會話」課程下學期不及格且上學期任一課程分數未達78分(含)，必須重修「英文作文」及「英語會話」課程一學年(上、下學期)，**重覆修習的課程學分不列入畢業學分**。

英文作文課程皆設有最低通過門檻，門檻由該年級作文課程老師共同訂定，可為測驗或指定之作業。未通過門檻者，無論平均分數是否及格，皆需重修該年級之作文會話課程。詳細通過門檻請見該科課程進度表。

3. 60分為及格分數。但本核准許學生某學年課上學期成績為50至59分者，可續修該科目下學期學分，並於下一學年上學期重修一學期即可(英文作文及英語會話課程除外)。成績低於50分以下者，則須經任課老師簽名同意，始可續修下學期課程。
4. 重覆修習名稱相同的課程，不列入畢業學分內。(體育課程不在此列。)
5. 大一~大三學生每學期須至少修12學分，大四學生每學期至少須修9學分。

英國語文學系學習課程地圖(<http://english.fju.edu.tw>)



| 必修 | 通識 |
|--|--|
| <ul style="list-style-type: none"> 大學入門 人生哲學 專業倫理 國文 外國語文 軍制 體育 | <ul style="list-style-type: none"> 人文與藝術通識領域 自然與科技通識領域 社會科學通識領域 |

| 選修 |
|---|
| <ul style="list-style-type: none"> 中華文化多領域 初階拉丁文 此類測驗準備：基本句型與閱讀 口譯英語與英語三音(一) 口譯英語與英語三音(二) 英語會話 商務英語聽力及閱讀 自修英文寫作寫作 理解文法 專業方法學 基礎英文寫作 聽測聽讀與欣賞 課堂商務報告演說 此類測驗準備：進階句型與閱讀 應用英文-電影片學英文 商務英語口說及寫作 科技英文閱讀與寫作 英文文法與修辭 高級商務專業研究 進階英文寫作與研究方法 英文寫作-研究報告寫作 閱讀美國文化 |

| 必修 |
|---|
| <p>大一：</p> <ul style="list-style-type: none"> 英文作文(一) 英語會話(一) 文學概論 希臘羅馬神話與典故 聖經文學概論 語言學概論(一) <p>大二：</p> <ul style="list-style-type: none"> 英文作文(二) 英語會話(二) 演說與辯論 語言學概論(二) 西方文明史(一) 西方文明史(二) <p>大三：</p> <ul style="list-style-type: none"> 英文作文(三) 英語會話(三) <p>大四：</p> <ul style="list-style-type: none"> 專業寫作課程 新聞英文寫作(一)、(二) 商務英文(一)、(二) 專業專題寫作 英文系列製作 專業寫作：英中翻譯 專業寫作：中英翻譯 |

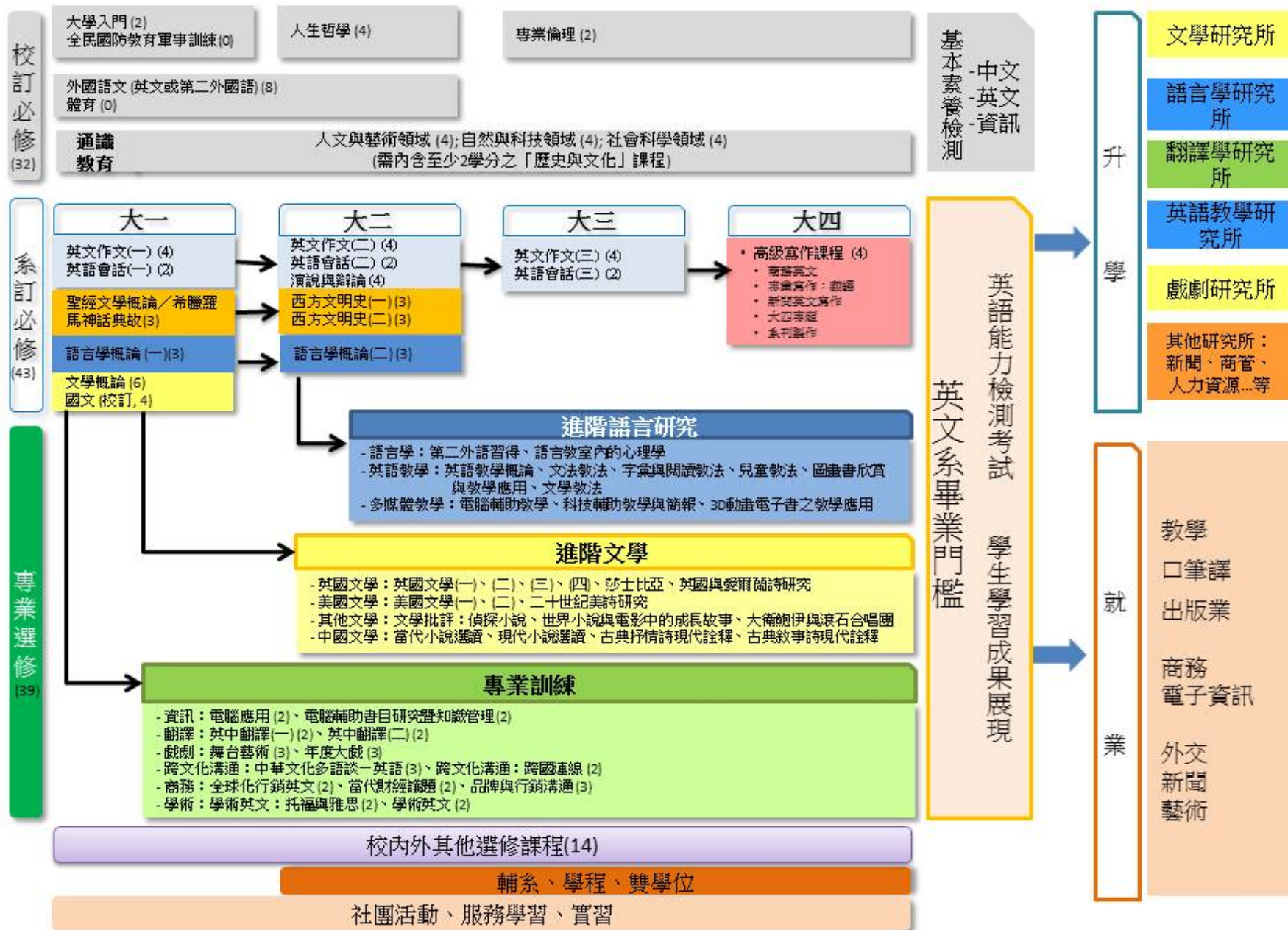
| 選修 |
|---|
| <p>進階文學與文化課程(106學年度)：</p> <ul style="list-style-type: none"> ※美國文學課程 美國文學(一)：中世紀英文藝復興 美國文學(二)：十七、十八世紀 廿及廿一世紀英荷中的性別與性別 ※英國文學課程 美國文學(一)：殖民時期至1865年 ※中國文學課程 現代小說選讀 當代小說選讀 ※其他文學課程 世界小說與電影中的成長故事 <p>專業訓練課程(106學年度)：</p> <ul style="list-style-type: none"> 電腦輔助書目及研究暨知識管理 電腦應用 口譯入門 英中翻譯(一) 跨文化溝通：國際通談 美食文明史 |

| 延伸學習課程 |
|--|
| <p>學程：</p> <ul style="list-style-type: none"> 外政與國際事務學程 兩岸公共與中世社文化學程 國際企業管理學程 海外華語教學學程 翻譯學程 英語菁英學程 <p>跨班學程一覽表</p> <p>雙主修：</p> <ul style="list-style-type: none"> 中國語文學系 法蘭西語文學系 日本語文學系 義大利語文學系 餐飲管理學系 國際貿易與金融學系 法律學系 財經法律學系 <p>跨班雙主修一覽表</p> <p>輔系：</p> <ul style="list-style-type: none"> 影像傳播學系 新聞傳播學系 廣告傳播學系 法蘭西語文學系 西班牙語文學系 德語文學系 心理學系 餐飲管理學系 法律學系 會計學系 資訊管理學系 國際貿易與金融學系 音樂學系 <p>跨班輔系一覽表</p> <p>跨校選修或國外研習：</p> <ul style="list-style-type: none"> 政治大學外語課程 德國拜特爾大學雙聯學制 |

| 未來發展領域 |
|---|
| <p>升學：</p> <ul style="list-style-type: none"> 英美文學 英語教學 語言學 新聞 飯店/娛樂/觀光管理 公共關係 企業管理 流行行銷 資訊科學 性別研究 口譯 藝術史 合作經濟學 行銷 心理學 人類學 教育 口語溝通 人力資源管理 歐洲文化與觀光 電訊傳播 文學創意寫作 平面設計 設計管理 藝術管理 <p>就業：</p> <ul style="list-style-type: none"> 教職人員 文化出版 傳播 資訊 金融 國際貿易 行銷 保險 觀光旅遊 娛樂 公務員 自由業(翻譯、文字創作等) |

| | | |
|------|----------------|---|
| 基本能力 | 校訂學科學習能力(認知) | 中文、英文、資訊 |
| | 校、院訂社會適應能力(技能) | 問題分析與解決行為、人際溝通行為、國際合作行為、創新行為 |
| 核心行為 | 專業知識(認知) | 高階英語表達能力、文學文化與歷史理解力、溝通與語言教學 |
| | 專業技能(技能) | 問題分析與解決行為、分析能力、創新行為、研究能力、人際溝通行為、國際合作行為 |
| | 系訂畢業規定 | CEFR (Common European Framework of Reference for Languages, 歐洲語言共同參考架構) B2 (高階級), 或其他程度相當之英語檢定標準。 學習成果展現其內容涵蓋以下三項之一：大三研究論文寫作與發表；畢業公債或系刊出版品；特定課程(畢業專題製作、學術寫作、學術英語、中英翻譯、新聞英語、商務報告、多媒體英語教材、系上視實際開課狀況增開課程)的期末報告或公開發表。 |

輔仁大學英國語文學系課程地圖總覽



外語學院校園禮儀

CFLC Campus Etiquette

經99.11.16九十九學年度第一學期外語學院院導師暨六系系導師代表會議通過

主旨：為落實本校全人教育理念，建立學生完整之價值體系，培養“對人尊重、對事負責”的優秀外語人才，並提昇其職場競爭力，特訂定外語學院校園禮儀。

Purposes: CFLC campus etiquette is hereby set up to realize Fu Jen's ideal of holistic education, to help students set up a sound value system, to cultivate not only students' foreign language abilities, but also their sense of respect and responsibility, and to increase students' competitiveness at work.

守則：Regulations

一、提昇學習成效：Increasing Learning Efficiency

1. 上課不遲到、不早退、不缺課 No tardiness, early departures, or absences.
2. 上課不吃東西，不睡覺，不閒聊 No eating, sleeping or chatting in class.
3. 考試不作弊，作業不抄襲 No cheating, or plagiarism.

二、提昇環保意識：Increasing Environmental Consciousness

1. 做好垃圾分類 Sort our garbage properly
2. 隨手關閉電源 Turn off electronic appliances when they are not being used.

三、相互禮讓，樂於服務：Promoting Students' Politeness and Willingness to Serve

1. 行路或搭乘電梯時禮讓師長 Give way to teachers and the elderly on walkways and in elevators.
2. 主動協助教學器材的借用、歸還或歸位 Help check out and return instructional equipment.

FJU ENG Majors



主動學習



負責積極
to develop a strong sense
of social responsibility



了解文化差異
to understand cultural
differences

發揮創意、進行批判思考

to be creative, critical and
productive in English

尊重他人與自我

to respect others as individuals

具全球視野與調適力

to maintain a global
perspective and to adapt
to change